



## Environmental Monitoring System for Critical IT Environments & Remote Locations

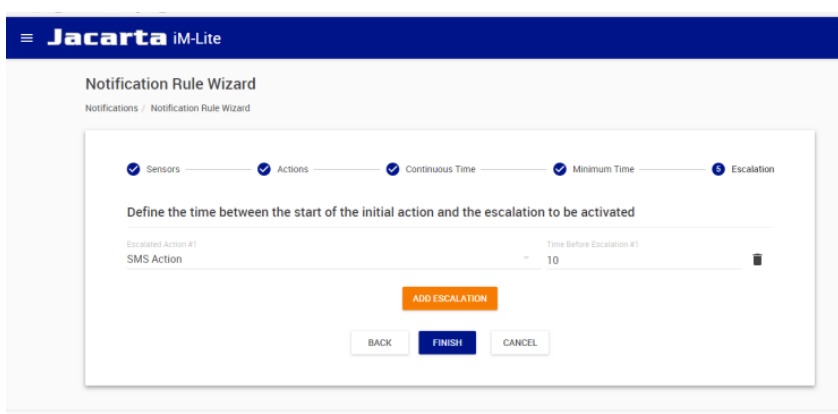


Monitoring the environment within your critical IT locations is key to ensuring network uptime, protecting hardware against failure and ensuring your IT equipment is working in optimum conditions.

iMeter Lite is suitable for use in a range of locations including:

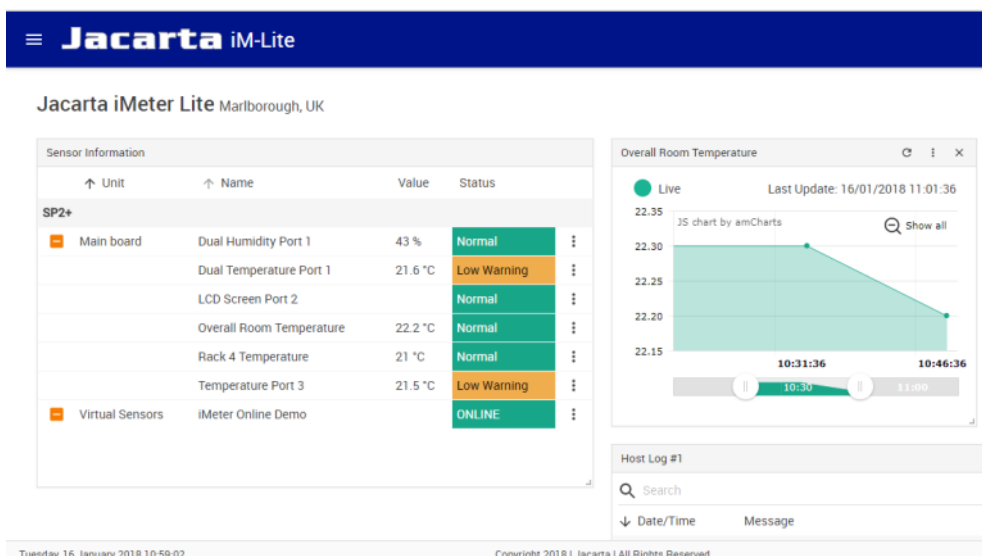
- Server Rooms
- Data Centres
- Comms Rooms
- Wiring Closets
- Remote Unmanned IT Locations
- Offices
- Storage and Warehousing Facilities

The iMeter Lite can monitor up to 4 x Go-Probe environmental sensors and configuration is carried out using the simple web browser interface. Once the alarm thresholds are set users can create custom alerting procedures to ensure personnel can react quickly to potential threats. Alerts can be sent via Email, SNMP, SMS Text, Telephone Voice Call and more!



### Key Features

- 4 x Sensor Ports - all ports function as sensor inputs and relay outputs
- Configuration via web browser interface - no additional software required
- Compatible sensors include:
  - Temperature/Humidity, Water Detection, Smoke Detection, Security Sensor, Power Failure, Dry Contact, Motion PIR, Airflow, Thermocouple (extreme temperature range)*
- Virtual Sensor feature - monitor other SNMP-enabled network equipment & trigger alerts
- Modbus TCP/IP compatible (with optional license)
- SNMP v1/2c (v3 optional)
- Real-time data graphing and event logging
- Flexible and customisable alerting matrix
- Alerts to alarm conditions sent via:
  - Email, SMS Text Message and Telephone Voice (GSM Modem version-only), SNMP, Local Alarm Beacon, Relay Output*
- Automatic integration with Jakarta PYXIS DCIM Lite software for large installations
- Secure multi-level password access
- Small form factor to minimise rack-space usage
- 1-Year Warranty (extended warranty options available)
- Free technical support via telephone and email



The web browser interface dashboard (above) is customisable and can show real-time sensor readings, graphs and event logs.

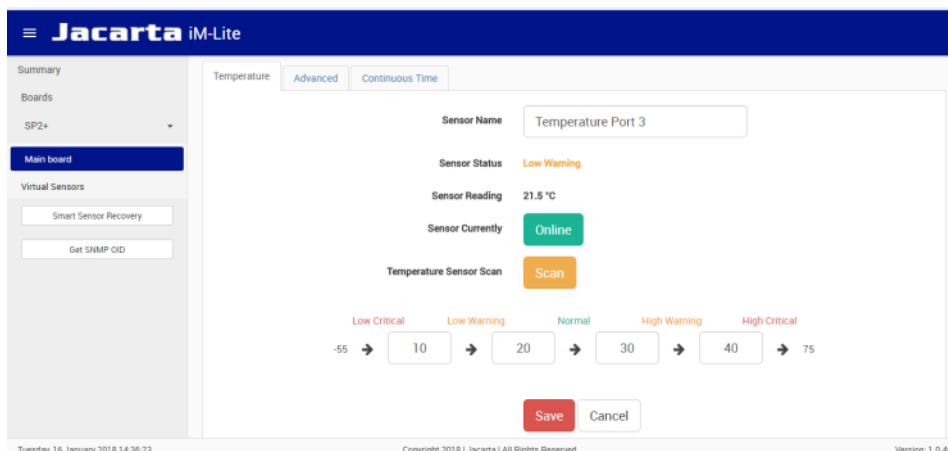
# Notifications and Alerting

iMeter-Lite uses a powerful alert-management interface that enables notification routing to be tailored to all types of organisational requirements. Users can be alerted to problems via:

- Local on-screen alerts
- Email
- Alarm Beacon
- Dry-Contact Relay Output
- SNMPset commands sent to existing systems
- SMS text messages and Telephone Voice alerts (using optional modem)

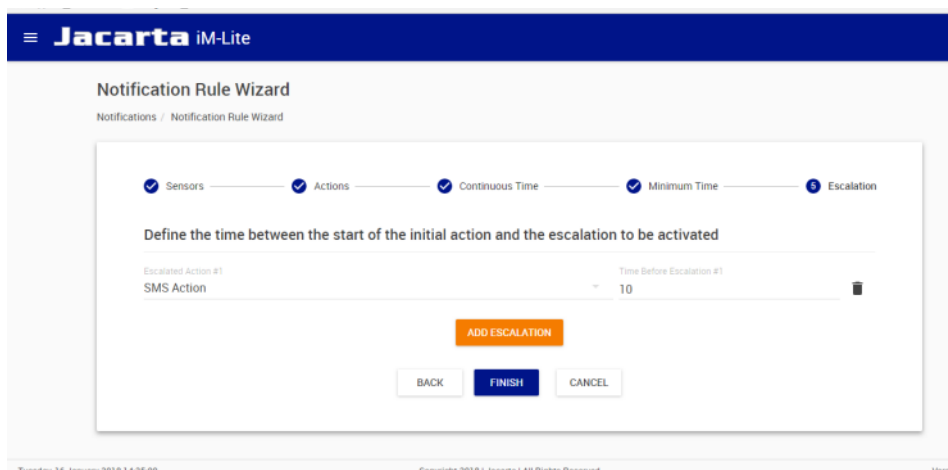
The alerting matrix allows customised alerts to be sent to key personnel. For example, if a temperature problem is experienced, an alert can be sent directly to on-call staff. Users can also define custom escalation procedures helping to ensure that any threats to network infrastructure are dealt with before any serious problems are caused.

The web-browser interface provides users with the ability to quickly and easily configure notification and alerting in three easy steps:



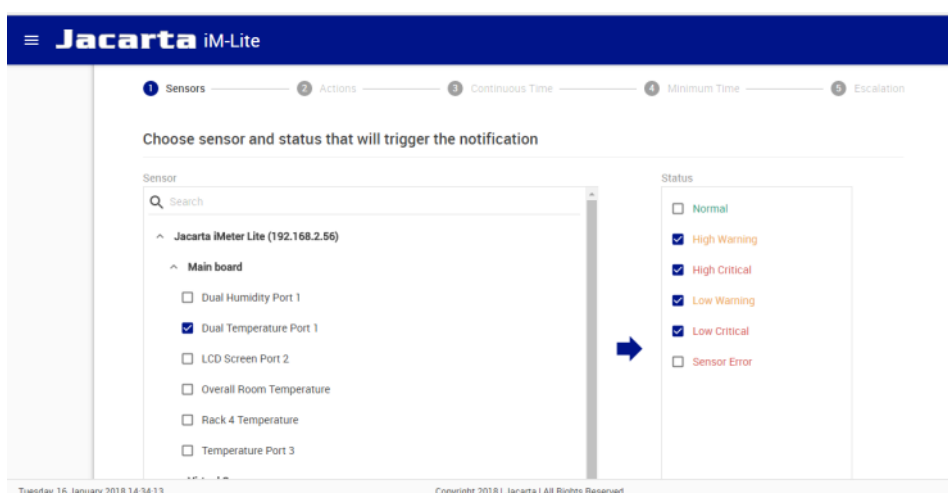
### Set Sensor Thresholds / Alarm State

Each sensor can be configured individually. Normal, Warning and Critical thresholds can be set for analogue sensors. Advanced settings allow users to add time delays to reduce false alarms, set sensor active times (i.e. enable motion detection alarms outside of office hours only) and enable sensor graphing.



### Configure Actions

Actions are alerting procedures that are triggered during alarm events. Users can define an unlimited number of actions to send alerts via Email, SMS Text Message and Telephone Voice (using optional GSM Modem), SNMP, Local Alarm Beacon & more. Alarm messages are fully customisable so that they are easy to act upon with sensor names, status and readings all available to recipients.



### Link Sensor to Action

Any sensor status change can be set to trigger any user-defined action. Different sensor states can trigger different actions—for example an email may be suitable when a sensor breaches a warning threshold but an SMS text may be more appropriate if a critical threshold is exceeded.

Users can also be notified when a sensor returns to a normal state and in the event of a sensor error. A daily heartbeat notification can also be sent with information about daily events.

## Go-Probe Environmental & Virtual Sensors

### Temperature and Humidity Sensor

The combined Temperature & Humidity sensor is small and discreet and allows you to monitor both environmental conditions using a single sensor input. The sensor can be provided with a waterproof housing for use in harsh environments.



### Water Detector

The Water Detector uses an advanced leak detection cable to sense the presence of water along its length. The water detector can be custom-built with up to 30m of water detecting sensor cable and up to 30m of interface cable.



### Security Sensor

The Security Sensor can be used to detect the opening of doors, racks, windows and cupboards. A time delay can be added to the alarm so that an alert is only sent if a door/window is left open beyond a certain amount of time.

### Virtual Sensors

The iMeter-Lite also has a Virtual Sensor feature that allows the device to collect data from other devices via SNMP or Modbus (optional license). The device has the capacity for up to 40 x Virtual Sensors all of which utilise the same central notification system as physical sensors, meaning that alerts can be sent via Email, SNMP, SMS & Relay Output. Typical uses include:

- Gathering environmental data from other Jakarta devices to create a central monitoring and alerting hub
- Integrating existing SNMP-enabled systems such as UPS, VESDA and AC Units in order to monitor their status from a central location and utilise the iMeter-Lite alerting systems in the event of a problem
- Pinging network hardware so that alerts can be sent out in the event of downtime

### Dry Contact Cable

The Dry Contact Cable can be used to connect the iMeter to any third-party device where dry contact outputs are available, such as UPS, VESDA, BMS Systems and AC Units.

### Smoke Detector

The Smoke Detector is a mains powered, ionisation based smoke detection unit that can be positioned to monitor for early signs of fire, triggering an iMeter alert and an audible alarm upon detection.

### Also available...

- Motion Detection
- Airflow
- Power Failure
- Temperature Only
- Thermocouple (for extreme temperature conditions)

*All Go-Probe Sensors are manufactured in the UK and can be built with custom interface cable lengths (up-to 30m) to suit your requirement.*

## iMeter-Lite—Specifications

- Sensor Capacity: 4 x Go-Probe Environmental Sensors  
Up-to 40 x Virtual Sensors
- Compatible Sensors: Temperature/Humidity  
Water Leak Detection  
Security Sensor  
Power Failure  
Airflow  
Thermocouple (extreme temperature range)  
Motion Detection (PIR)  
Dry-Contact Cable (for connection to third-party systems)
- Relay Outputs: Any RJ45 sensor port can be configured as a relay
- Optional Equipment: GSM Modem for SMS and Voice Alerts  
Alarm Beacon for Audio Visual Alarms
- Network: 10/100Mbps Ethernet (auto-sense)
- Status Indicators: Sensor online and status LED, Power LED, 10/100 LED
- Configuration: Web-browser interface
- Monitoring: Browser, NMS
- SNMP: v1, 2c & 3 (optional)
- Alerts: Email, SNMP traps, Voice and SMS via optional internal GSM Modem
- Logging: Event & System Status
- Graphs: Real-time and historical
- Graphing Interval: User-Configurable
- Firmware Upgrade: Via Network Connection
- System Security: IP based filtering and password protection
- Weight (kg): 0.3
- Dimensions (cm): 4.6 (h) x 21.6 (w) x 13.8 (d)
- Power: 5VDC PSU supplied
- Warranty: 1 Year